



Front Desk - 0
 Bistro - 614
 Veranda - 616

- 1. Front Desk & Lobby
- 2. Terrace
- 3. 2nd Floor Pub & Veranda
- 4. Bistro
- 5. Conference Center
- 6. River Room
- 7. Park Room
- 8. River Room Spa
- 9. Lakeside Room
- 10. Beach Bar
- 11. 5423
- 12. Cabin 175
- 13. Cabin 176
- 14. Auxiliary Parking

- L Laundry
- P Pool
- H Hot Tub
- E Elevator
- I Ice/Soda Machine
- R Recycle

CAMPBELL'S
 LAKE CHELAN'S WATERFRONT RESORT

Contents

President's Welcome 1

Conference Sponsors 2

General Information 5

Wednesday Conference Program 6

Thursday Conference Program 8

Friday Conference Program 12

Roundtable Times 13

Record of Attendance 14-15

Debt Track 16

Investments Track 17

Banking Track 18

Treasury Management Track 19

Accounting Track 20

Investment Policy Certification Program 21

Debt Policy Certification Program 22

Past Conference Themes 23

2013-14 Officers & Board Members 24

President's Award 25

Nominations for 2014-15 Board 26

The Board's Message 27

Facility Maps of Campbell's Resort 28

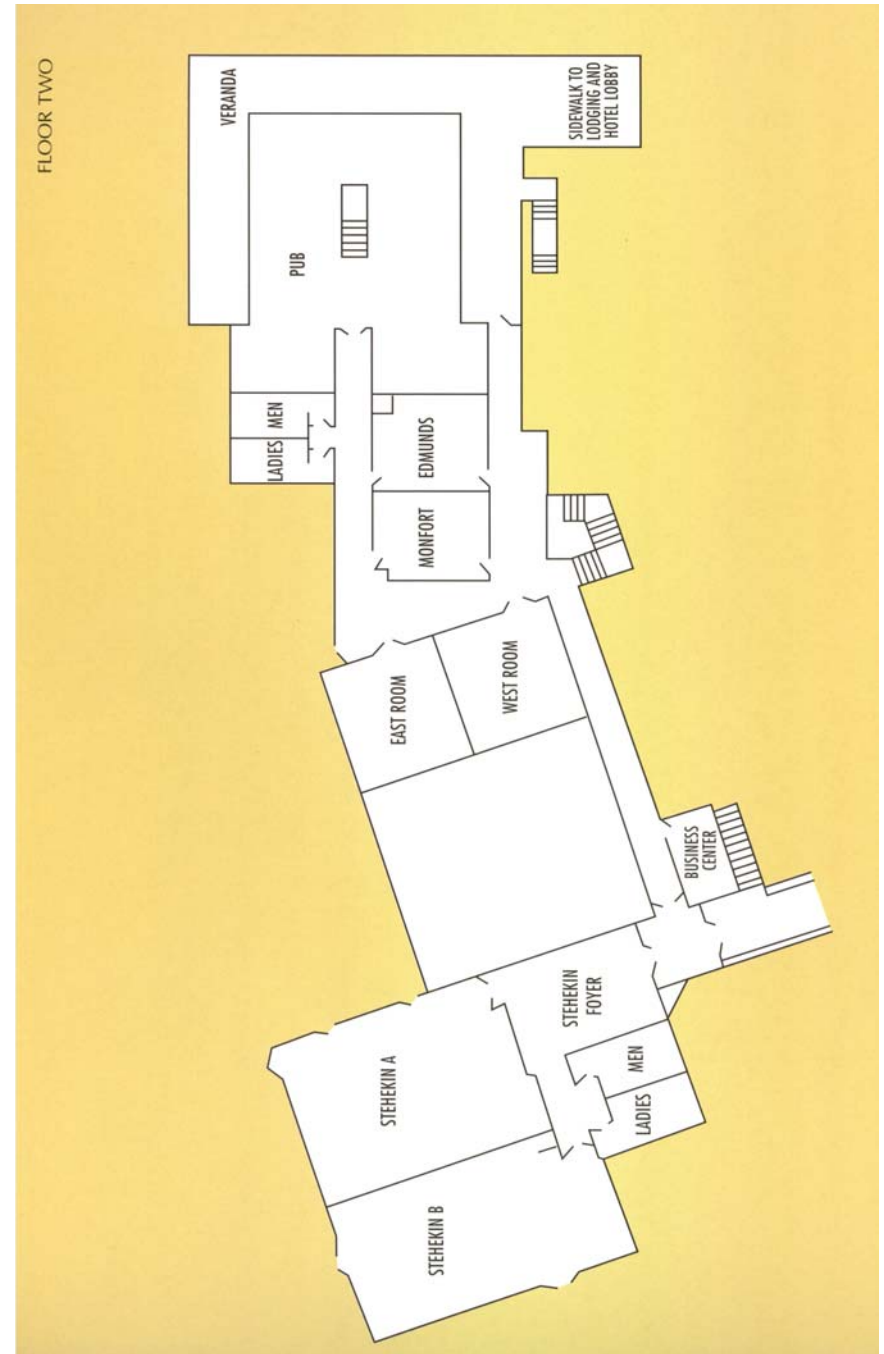
Schedule At-A-Glance..... Back Cover



WMTA Mission Statement

To promote the profession of Municipal Treasurers in the state of Washington through education, mutual support, professional recognition, and legislative advocacy.

You can visit the WMTA website at www.wmta-online.com



Upper Level

President's Welcome

Welcome to the 31st Annual Washington Municipal Treasurer's Association conference! The board has worked diligently to provide an exciting and educational venue.

I am encourage and look forward to meeting all attendees and hope you take advantage of the many classes offered as well as information sharing with your peers.

This year I have chosen to use Harry Potter World of Wizarding as my theme. One of the large reasons I enjoy the series is not only because of the magic and imagination, but because of the person Harry represents. He is brought up in a home always reminded he is the orphaned child his relatives have taken in, and not as, or will never be as important as his cousin. He is made to feel unloved, somewhat worthless and different. When he reaches the age of 10 he then learns he has an entirely different world where he is famous and thought of a hero, whose parent's love and protection allowed him to be the only wizard to survive the death sentence of an evil wizard. In his world, he develops long lasting and loyal friends as well as mentors to help guide him to be a highly respectful adult, hero and friend.

It matters not what someone is born, but what they grow to be.

- Albus DUMBLEDORE

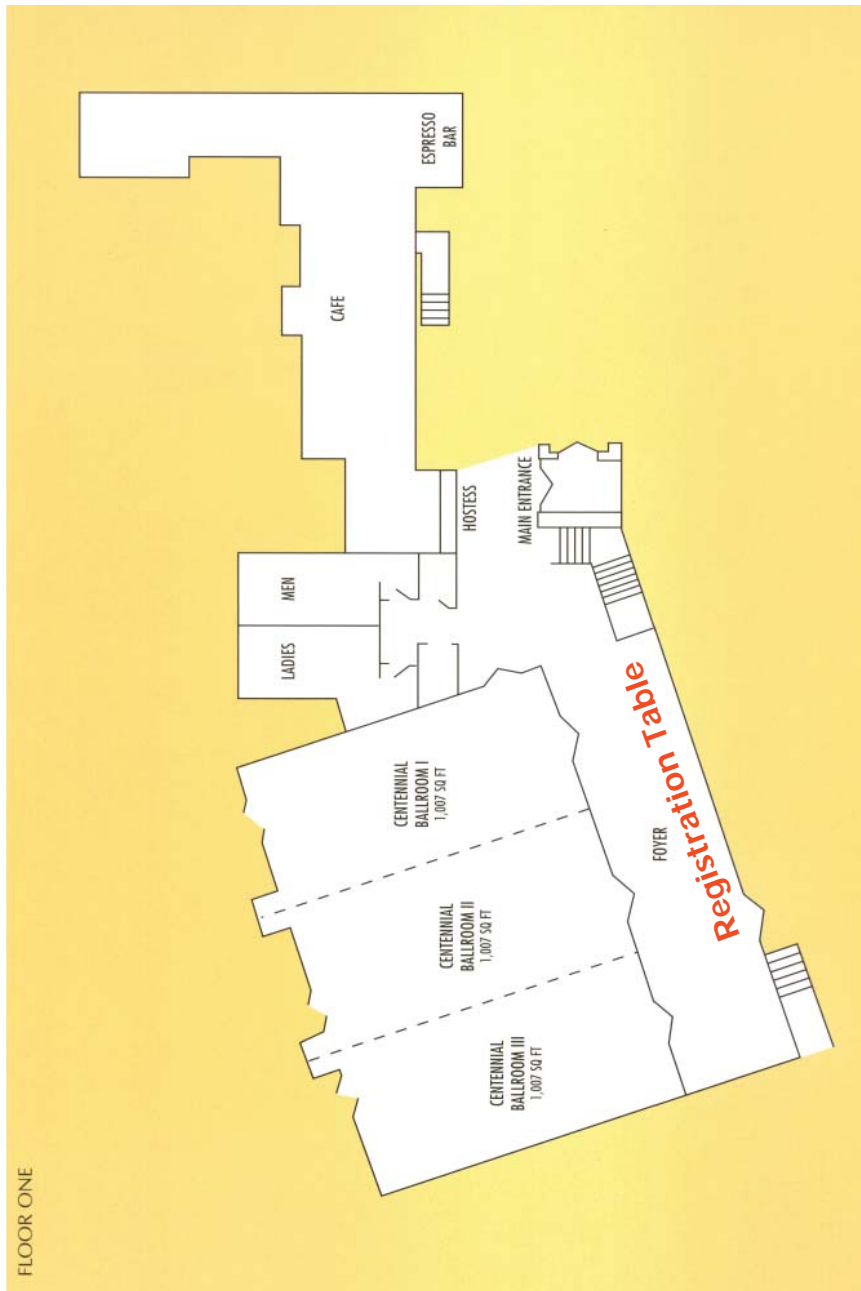
I think there are many times in our positions; we are made to feel the bad guy because we are the keeper of the funds and ones who help our agencies maintain accountability to the laws, rules and policies which govern us. At the conference, in the world of treasurer's we are among our peers and can share our successes and recognize our fellow heroes and educate ourselves to help make our profession and agencies work more efficiently, collaboratively and successfully serve our citizens, who are the main stakeholders of what we serve.

I challenge all of you to share your magic at the conference and let us all return back to our offices with new spells, talents, and friends to utilize for an ever improving environment!

Thank you for all your support and allowing me to serve you this past year! It has been a true pleasure to work with your board members and share our organization with our fellow state and national organizations!



Deborah Booher, President



FLOOR ONE

Lower Level

Conference Sponsors

The WMTA Board and the Conference Chair would like to extend a very special **thank you** to all the sponsors who have helped make this 2014 conference a success. A conference such as this requires significant financial resources. The generosity of the sponsors allows the WMTA to continue to provide quality educational programs at an affordable cost.

Sponsors provide financial assistance for events such as the President's Reception, meals, break refreshments, receptions, the Chelan Riverfront Park Walk/Run, tote bags, the golf tournament, and much more.

A complete listing of all conference sponsors is also included in your registration packet. Throughout the conference, please take a moment to welcome and thank the representatives of these businesses.

Bank of America Merrill Lynch

BNY Mellon

Cashmere Valley Bank

D.A. Davidson & Co.

Foster Pepper, PLLC

Government Perspectives, LLC

Government Portfolio Advisors/Mutual Securities

K&L Gates LLP

KeyBanc Capital Markets Inc.

Martin Nelson & Company

Piper Jaffray & Co.

Public Financial Management, Inc.

Time Value Investments, Inc.

Umpqua Bank

US Bank

Value Payment Systems, LLC

Vining Sparks

Washington Federal

Wells Fargo Bank

The Board's Message

As we wrap up on the final day of conference, it is our goal that your time here has been well spent. We would like to ask that you take a moment to consider the following questions about this week.

- Did you meet new friends?
- Did you collect new networking contacts?
- Did you obtain any new or updated information?
- Did you get a chance to relax, have fun, and feel refreshed?

Hopefully you can answer "yes" to one or several of these questions. We are very interested in your feedback. We encourage you to complete your **WMTA 2014 Conference Surveys** which will be sent to you via email. Your comments help us make plans and improvements for next year's conference.

We thank each of you for your attendance and participation this year. Don't forget, the WMTA Board is always looking for enthusiastic individuals to assist with next year's conference. If you are interested in helping out with any of the conference or board committees (audit, budget, conference, education, historian, investment policy certification, legislative, membership, newsletter, nomination, or scholarship), please call or email any board member. You can find our phone and email addresses on the website at www.wmta-online.com.

**We
Want YOU!**

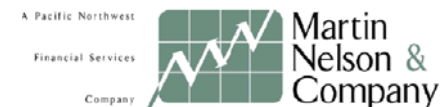
Nominations for 2014-15 Board

President	Michael Olson, Deputy Director, Finance and Administration, City of Kirkland
President-Elect	Stephanie McKenzie, Finance Director, City of Enumclaw
Secretary	Philip Steffen, Senior Accountant, City of Anacortes
Treasurer	Elizabeth Alba, Deputy Finance Director/City Clerk, City of Toppenish
Immediate Past President	Deborah Booher, Finance Director, City of Poulsbo
Board Members	
Position No. 1 - 2014-16	Cheryl Grant, Finance Director, City of Chelan
Position No. 2 - 2013-15	Kari Sample, LGIP Administrator, Washington State Treasurer's Office
Position No. 3 - 2014-16	Gwen Pilo, Finance Manager, NORCOM
Position No. 4 - 2013-15	Vickie Strong, City Treasurer, City of Colville
Position No. 5 - 2014-16	Kathy P. Tobin, CPA, Business Manager/Treasurer, Quincy-Columbia Basin Irrigation District
Position No. 6 - 2013-15	Nicole Muegge, Banking & Investment Officer, Thurston County Treasurer
Position No. 7 - 2013-15	Vacant
APT US&C Representative and Ex-Officio	Doug Extine, Deputy Treasurer, Washington State Treasurer's Office

It DOES not do to dWELL on
dREAMS and FORGET to live.

- Albus DumbledORE

Conference Sponsors



Conference Sponsors

GUIDES FOR THE JOURNEY.® | PiperJaffray



TVI | TIME VALUE INVESTMENTS®



EST. 1863



ValuePaymentSystems



Washington
Federal.
invested here.

WELLS
FARGO

President's Award

Presented each year by the outgoing WMTA President, this award is given . . .

In recognition and appreciation for years of outstanding contributions to the membership of the Washington Municipal Treasurers Association.

<u>Year</u>	<u>Recipient</u>
1996	Kris Tompkins
1997	Not awarded
1998	Rosie Rumsey
1999	Ron Strabbing
2000	Not awarded
2001	Wendy Picinich
2002	Jim Hendrickson
2003	Steve Kimble
2004	Monica Haarstad
2005	Nanci Lien
2006	Kelly Devlin
2007	Nanci Lien
2008	Arif Kanji
2009	Rick Patrick Robbi Stedman
2010	Robbi Stedman
2011	Doug Extine
2012	Doug Merriman
2013	Deborah Booher

2013-14 Officers & Board Members

Officers

President

Deborah Booher, Finance Director, City of Poulsbo*

President-Elect

Michael Olson, Deputy Director, Finance and Administration, City of Kirkland

Secretary

Stephanie McKenzie, Finance Director, City of Enumclaw

Treasurer

Elizabeth Alba, Deputy Finance Director/City Clerk, City of Toppenish

Immediate Past President

Dianne Nelson, Finance Director, City of Monroe

Board Members

Board Position No. 1

Cheryl Grant, Finance Director, City of Chelan

Board Position No. 2

Kari Sample, LGIP Administrator, Washington State Treasurer's Office

Board Position No. 3

Gwen Pilo, Finance Manager, NORCOM

Board Position No. 4

Vickie Strong, City Treasurer, City of Colville

Board Position No. 5

Kathy P. Tobin, CPA, Business Manager/Treasurer, Quincy-Columbia Basin Irrigation District

Board Position No. 6

Nicole Muegge, Banking & Investment Officer, Thurston County Treasurer

Board Position No. 7

Philip Steffen, Senior Accountant, City of Anacortes

APT US&C Representative and Ex-Officio

Doug Extine, Deputy Treasurer, Office of the State Treasurer

*Conference Chair

General Information

Badges

Please wear your Conference badges to all functions.

Conference Registration

The WMTA Conference Registration Table is located in the foyer of Campbell's Resort & Conference Center. All Conference attendees must register and obtain identification badges for themselves and guests who will be attending Conference activities. To receive your Conference materials and Conference badge, please check in at the Conference Registration Table.

Meals

Meals provided with conference registration include:

Wednesday preconference box lunch; Wednesday dinner at Campbell's;
Thursday buffet breakfast; Thursday lunch; Thursday wine tasting reception
and banquet dinner; Friday buffet breakfast; Friday snack

Meal Tickets

Tickets for meals may be purchased during the conference at the Conference Registration Table.

Conference Facilities

With the exception of the Golf Tournament, all conference activities will be held at Campbell's Resort. For your convenience, a site map is included inside the back page of this handbook.

Business Center

Campbell's Conference Center provides a business center for guests needing a private office, equipped with computer, internet, fax, copier, etc. Wireless internet is also available. The Business Center is located on the second floor of the Conference Center (just above the WMTA Conference Registration Table).

Wireless Internet Access

Campbell's Resort offers wireless internet access to their guests. Wi-Fi login cards are available at the hotel registration desk.

CPE/CPFA/ACPFPA Credits

CPE, CPFA, and ACPFPA credits for continuing professional standards are available for each of the sessions. Attendees should sign the attendance sheet at each session. The center of this Conference Handbook includes a "Record of Attendance" sheet to be completed and retained by attendees to verify attendance. WMTA will provide copies of the sign-in sheets online for CPE credits and other attendance verification purposes. For other certifications, attendees should be sure to retain your handbook "Record of Attendance."

Conference Program – Wednesday

Conference Registration Table Hours 9:30am - 1:30pm

Golf Tournament 10:00am - 5:30pm
Sponsors: KeyBanc; Piper Jaffray; Vining Sparks

Lean Disclosure 10:30am - 12:00pm
Location: Stehekin A (upper Level)

Learn how the UW bond disclosure documents got LEAN. The University of Washington recently used a LEAN process to reconsider how it collects and updates financial and operating data for its bond disclosure documents, prepares and releases the bond disclosure documents (preliminary and final official statements, ratings agency presentations, and investor “road show” presentations), and identifies new trends and other developments to add to its bond disclosure documents. Ruchi Aggarwal, Associate Treasurer, for the University of Washington, will share how the UW bond disclosure documents got LEAN, including lessons learned that may be helpful for other bond issuers.

The Techy Taxpayer 10:30am - 12:00pm
Location: Stehekin B (upper Level)

Tweeting, blogging, and facebooking your city or county’s budget and financial statements? This session will discuss communicating financial and other information with your digital constituents while identifying pitfalls and opportunities. Matt Segal and Deanna Gregory of Pacifica Law Group will address “Digital Constituency” covering issues involving the use of social media to communicate with your constituents. Discussion will include the applicability of open public meetings, open public records and municipal ethics laws to blogs, tweets, emails, facebook and other social media.

Box Lunch 12:00pm - 1:00pm
Location: Stehekin Foyer (upper level)
Sponsors: Time Value Investments; D.A. Davidson & Co.

Past Conference Themes

Year	Theme	President
1984		George Khatian
1985		Lloyd Hara
1986		Paul Kasakabe
1987		Betty Nahoopii
1988		Harry Wong
1989		Lillian Luark
1990	Country Western - “Visit Treasurers’ Country”	Ann Berger
1991	50s and 60s - “Remember When”	Paul Gudgerisson
1992	Cruise - “Keeping Afloat in the 90s”	Kristine Miller
1993	Hawaiian Luau/South Seas - “Treasure Island”	Dale Sciuchetti
1994	Country Western - “A Fist Full of Dollar\$”	Wendy Picinich
1995	Star Trek - “Trekking Toward Tomorrow”	Rob Hendrickson
1996	Irish - “Green Grow the Dollar\$”	Mike Murphy
1997	Jungle - “A Financial Safari”	Connie Leonard
1998	Sports - “Financial All-Stars”	Rosie Rumsey/ Randy Krumm
1999	South of the Border - “Viva La Finance”	Ron Hupp
2000	Handyman - “Tooltime for Treasurers”	Jim Hendrickson
2001	Circus - “Under the Treasury Big Top”	Monica Haarstad
2002	Train - “All Aboard the Treasurers Express”	Paulette Alvarado
2003	Cameras - “Focus on Finance”	Ron Strabbing
2004	Money Makes the World Go ‘Round	Yvonne Ziomkowski
2005	Financial “Ports of Call”	Craig Kerr
2006	Financial “Roundup”	Allan Martin
2007	Mardi Gras - “Ooh La La \$\$ Moo La La”	Doug Extine
2008	Fishing for Silver - 25th Anniversary	Doug Extine
2009	Follow the Financial Brick Road	Nanci Lien
2010	Diving for Treasure	Michael Legarsky
2011	Reaching the Summit	Doug Merriman
2012	Gardening - Digging for Dollars	Dianne Nelson
2013	Super Heroes - “The Heroic Age of the Public Treasurer	Dianne Nelson

Debt Policy Certification Program

The Washington Municipal Treasurers Association (WMTA) Debt Policy Certification Program is designed to provide professional guidance and assistance in developing or revising your debt policy. Your debt policy helps protect your debt officers and entity, and gives your hired professionals and you clear direction of your debt goals. Certification of your policy is also important because it will ensure your policy includes the vital elements that should be addressed in a good and thorough policy. In addition, your governing board and the public will view this WMTA certification as your commitment to a quality debt program and ultimately, preserving the strength and security of your entity's public credit.

For additional information including the sample debt policy, guidelines for the development of a debt policy, and the form needed to apply for certification visit our Debt Policy Certification Program page at http://www.wmta-online.com/cert_debt.html.

I look forward to working with you on creating, improving, and certifying your debt policy! Please call me at (360) 902-9025, or e-mail me at svein@tre.wa.gov, with any questions or to request an information packet.

Svein Braseth
Debt Policy Certification Chair

Conference Program – Wednesday

Intermediate Governmental Accounting 1:00pm - 4:30pm
Location: Stehekin A (upper Level)

For those that already have a basic knowledge of governmental accounting and/or some accounting training. This class will cover GAAP basis accounting, capital assets, budgetary accounting and financial reporting and will be instructed by our own WMTA Board member, Elizabeth Alba from the City of Toppenish.

**Creating a Politically Correct Portfolio,
Critical Thinking and Application** 1:00pm - 4:30pm
Location: Stehekin B (upper Level)

Representatives from Cantor Fitzgerald will cover the intrinsic political and economic factors in determining a suitable balance between the policy objectives of preserving principal and earning a market rate of return. Instructors will cover concepts of critical thinking in the development of an Investment Plan such as liquidity estimating and security. They will also provide examples using security metrics such as OAS, yield, effective duration, and convexity. Attendees will explore what differentiates book yield and total return, along with the implication of both for budgeting and performance reporting purposes. Throughout the session instructors will be coaching participants on how to communicate with stakeholders particularly in regards to paper gains and losses.

Dinner at Campbell's Resort 6:00pm
Location: Ballroom I, II, III
Sponsors: Piper Jaffray; The PFM Group

This is a casual affair and a chance to meet new friends and catch up with old ones. No need to drive anywhere. Join us right here at the Campbell's Resort. Background music provided by Kylie Booher.

Conference Program – Thursday

Chelan Riverfront Park Walk/Run

6:30am

Location: Check in at the hotel lobby

Sponsor: Washington Federal

On Thursday morning, grab your gear and meet up with your team at the Campbell's lobby to begin your morning trek around the beautiful Chelan Riverfront Park. This peaceful route along the Chelan River is a perfectly calm start to a busy conference day. Enjoy the views, the chance to get your system charged for the day, and don't forget your infusion tumbler at the finish!

Conference Registration Table Hours

7:30am - 1:30pm

Buffet Breakfast

7:30am - 8:30am

Location: Ballroom I, II, III

Sponsor: Martin Nelson & Company; Bank of America

Welcome and General Session

8:30am

Location: Stehekin A & B (upper level)

Sponsor: Wells Fargo

- National Anthem performed by Kylie Booher
- Deborah Booher, WMTA President

Different Generations, Different Challenges

8:45am - 11:45am

Location: Stehekin A & B (upper level)

Instructor: Brad Worthley

Today's workforce is different from the past and if we don't learn to understand the differences, then we will get frustrated by those differences. It seems that the Baby Boomers, who tend to make up a large part of today's leadership, are developing increasing anxiety over how to communicate with generation "Y" or the "Millennials" as they like

Investment Policy Certification Program

Founded in 1983, the Washington Municipal Treasurers Association (WMTA) has provided the local governments of Washington with opportunities for education, networking, and working to improve and promote the treasury management profession.

One tremendous benefit of WMTA is the Investment Policy Certification Program, which has been assisting local governments with their investment policies since 1988. The importance of this program begins with realizing that an investment policy protects your investment officers and entity, and gives the broker/dealers who cover you clear direction of your investment goals. In addition, your governing board and the public will view this WMTA certification as your commitment to a quality investment program and ultimately, the safety of your entity's funds.

You will receive the expertise of WMTA's policy review committee and will know that your policy includes the vital elements that should be addressed in a good and thorough policy. Once certified, you will be presented with a plaque and be recognized at WMTA's annual conference in Chelan.

For additional information including pricing, application, guidelines, and model policy to get you started, visit our Investment Policy Certification page at http://www.wmta-online.com/cert_invest.html.

I look forward to working with you on creating, improving, and certifying your investment policy! Please call me at (360) 786-5144, or e-mail me at mueggen@co.thurston.wa.us, with any questions or to request an information packet.

Nicole Muegge

Chairman, WMTA Investment Policy Certification Committee

Accounting Track

State Auditor's Office Roundtable

Location: River Room

Christy Raske and Alexandra Johnson will discuss changes to reporting requirements including the latest GASB standards, audit report changes, and annual report updates.

Five Components of Internal Controls

Location: River Room

Laurie Steele of Marion County OR will provide core knowledge of Internal Controls concepts. During this session, you will learn the five components of effective internal controls and how you can implement them at your office.

Let us step out into the
night and pursue that flighty
temptress, adventure.

— Albus Dumbledore



Debbie Booher and her Mom at Universal Studios Florida in front of Hogwarts Castle.

Conference Program – Thursday

to be called. This session will clarify the generation differences and give you the answers on how to communicate respectfully with each other in order to get the most from everyone.

- Defining the generations
- How they impact the workplace
- They don't like to be dictated to, so don't
- How to lead and not manage them
- How praise and recognition impacts the generations
- How to communicate with respect

Simple Steps to an Extraordinary Career & Life

Location: Stehekin A & B (upper level)

Instructor: Brad Worthley

This seminar will explain in tremendous detail, but in an incredibly simplistic manner, how we often sabotage our own careers and lives. Not only will this seminar awaken attendees to the inner saboteur that everyone has, which most people have no idea even exists, but it will give them the solutions for immediate changes. This seminar is not about paradigm shifting, putting it out to the universe or some complex relative theory; attendees will learn the exact steps needed to make long lasting positive changes in their careers and lives. The result of this seminar is employees who are engaged, powerful, accountable and ready to take on the world. It also opens them up emotionally, breaks down barriers and creates the desire for deeper learning. It will change lives! Some of the topics it will include are:

- Three Levels of Desire
- Two Emotional Motivators
- Understanding Fear
- Paralysis of Victimization
- Your Inner Saboteur
- Reinventing Yourself
- Energy Givers & Vampires

Lunch and Business Meeting

11:45am - 1:00pm

Location: Ballroom I, II, III

Sponsors: Government Perspectives; US Bank

Conference Program – Thursday

Business Meeting

- Call to Order/Approval of Minutes
- Sponsor and Partner Agency Recognition
- State Treasurer's Office Update
- New Business
- Nominations for 2014-15 WMTA Officers and Board Members (information on page 26 in your conference handbook)
- Installation of New Officers & Board Members
- Special Retirement Recognitions
- President's Award
- Adjournment

Roundtable Sessions

(see pages 16-20 for Roundtable descriptions)

1:00pm - 2:30pm

Break

2:30pm - 2:45pm

Roundtable Sessions

(see pages 16-20 for Roundtable descriptions)

2:45pm - 4:15pm

Wine Tasting Reception

Location: Ballroom I, II, III

Sponsor: Bank of New York Mellon

5:30pm - 6:30pm

Banquet Dinner

Location: Ballroom I, II, III

Sponsor: KeyBanc

6:30pm - 7:15pm

Treasury Management Track

Managing Organizational Change & Mentoring the Next Generation

Location: Stehekin A

Bob Jean, a long time local government manager will provide perspective from his years of experience on ways to best manage organizational change. Be equipped for when you are faced with doing more with less, adjusting to policy changes, reorganizations, and other factors that result in changes within you organization. Bob will also cover the necessity of knowledge transfer as we consider what it takes to mentor the next generation of public servants and local government leaders.

Small Cities Roundtable

Location: East Room

Toni Nelson, a small cities subject matter expert, will help facilitate discussions regarding current and upcoming issues related to small cities.

Utility Collections – Liens, Foreclosures, and Bankruptcy

Location: East Room

Kristin Eick & Brad Nelson will lead a discussion regarding utility collection issues. They will cover practical and legal perspectives with an emphasis on utility liens and the impact of foreclosures, bankruptcy, and enforcement of the liens.

I solemnly swear that I am up
to no good.

– MAURADERS MAP

Banking Track

Paperless Disbursements

Location: Stehekin B

Michael Green of Bank of America will present information regarding best practice data on e-pay usage from a Treasury perspective, providing reasons and value of transforming paper payment to pre-paid card. Michael Olson of the City of Kirkland, will discuss fraud protection measures that should be in place with banking, processes, staffing roles and your finance systems.

Pre-Paid Cards

Location: Stehekin A

Brandon Nowac of KeyBanc and Ed Hiddelson of Wells Fargo will provide members with an overview of pre-paid cards. Their presentation will cover industry updates including uses and benefits in the public sector.

The Changing Landscape of Merchant Card Payments: Security, Interchange, and Compliance

Location: Stehekin B

Cathleen Cogan of Wells Fargo and Ryan Pitroff from the State Treasurer's Office will provide an in-depth look at the current state and future of accepting card payments with focus on data security and fraud mitigation, trends in technology such as EMV, tokenization and encryption as well as a look at managing interchange costs and understanding new rules on surcharges and debit transactions... all tailored to the government sector.

WORKING hard is important, but THERE IS SOMETHING
that matters EVEN MORE, BELIEVING IN YOURSELF.

- HARRY POTTER

Conference Program – Thursday

Scholarship and Silent Auction and Raffle

7:15pm - 8:00pm

Location: Ballroom I, II, III

One of the highlights of the WMTA Conference is the live auction. On Thursday evening, the atmosphere in the main ballroom comes alive as conference attendees wave paddles and attempt to out-bid each other on everything from T-shirts to sparkling crystal to sporting event tickets. Also, a very big THANK YOU to our very own Ron Hupp for lending his auctioneering talents to this fun event!

For those individuals that don't want to raise the paddle during the live auction, we will be having a silent auction where you can try to out bid your competition.

You'll also notice WMTA board members selling raffle tickets throughout the conference. The raffle takes place at break on Friday and always ends with the ultimate prize, the combo HD TV/DVD player (thanks for sponsoring, Vining Sparks). Proceeds from these two fund-raisers provide scholarships to the WMTA State Conference and the APT National Conference. Since 1985, WMTA has awarded over \$67,000 in scholarships to assist local governments in staying connected to these organizations that provide invaluable educational and networking opportunities. Please come and participate by supporting these worthy and fun events!

Music Entertainment

8:15pm - 9:15pm

Location: Ballroom I, II, III

Dueling Pianos with Jeff & Rhiannon
Two Pianos
Two Voices
One Unforgettable Experience



Conference Program – Friday

Buffet Breakfast 7:30am - 8:30am
Location: Ballroom I, II, III
Sponsor: Government Portfolio Advisors

Roundtable Sessions 8:30am - 10:00am
(see pages 16-20 for Roundtable descriptions)

Break and Scholarship Raffle Drawing 10:00am - 10:30am
Location: Ballroom I, II, III
Sponsors: Vining Sparks; Umpqua Bank; K&L Gates

Roundtable Sessions 10:30am - 12:00pm
(see pages 16-20 for Roundtable descriptions)

Adjourned 12:00pm

Thank you for attending!



July 2013 Board Meeting

Front row: Kari Sample, Michael Olson, Elizabeth Alba, Joy Culp, Stephanie McKenzie, Debbie Booher
Back row: Nicole Muegge, Stephanie McKenzie, Dianne Nelson, Cheryl Grant, Doug Extine, Kathy Tobin

Investments Track

Investment Policy Development
Location: West Room

Come hear from members of the Investment Policy Certification committee about the components that make up a quality Investment Policy. You will also learn about upcoming changes to the certification process.

Investment Panel
Location: Park Room

Get together with fellow investment officers to discuss the hot topics related to public fund investing. Discussions will be led by Doug Extine from the State Treasurer's Office along with Anthony Nelson of Vining Sparks and Deanne Woodring of Government Portfolio Advisors.

Building Win-Win Relationships
Location: Park Room

Our tendency to view relationships with broker/dealers and other service providers as "us" versus "them" stems from a misunderstanding over the roles providers are meant to perform. Learn their various roles and business models and how to identify which are best suited to provide value to your agency. This presentation will also review the evolving concept of fiduciary responsibility and share best practices for building productive, win-win relationships.

Debt Track

Debt Policy Development – What, Why, and How Learn

Location: West Room

Why is a debt policy is so important? Hear from members of the Debt Policy Certification committee about the components that make up a quality Debt Policy and how to get started developing one. Potential new topic areas for a debt policy will also be discussed.

Avoiding Pitfalls after Bond Issuance

Location: West Room

This session will review recent SEC enforcement actions against municipal issuers after bonds have been issued, and discuss tools to avoid certain post-issuance pitfalls including a walk through the MSRB's EMMA site and continuing disclosure tools, and a discussion of IRS record retention requirements and written post-issuance compliance procedures

It is our choices that show what we truly are, far more than our abilities.

- Albus DUMBLEDORE



Harry Potter Butter Beer

Roundtable Times

	Location	Thursday	Friday
Debt Track			
Avoiding Pitfalls after Bond Issuance	West Room	2:45-4:15	8:30-10:00
Debt Policy Development – What, Why, and How Learn	West Room	-	10:30-12:00
Investments Track			
Investment Panel	Park Room	1:00-2:30	10:30-12:00
Investment Policy Development	West Room	1:00-2:30	-
Building Win-Win Relationships	Park Room	2:45-4:15	8:30-10:00
Banking Track			
Paperless Disbursements	Stehekin B	1:00-2:30	10:30-12:00
Pre-Paid Cards	Stehekin A	2:45-4:15	8:30-10:00
The Changing Landscape of Merchant Card Payments	Stehekin B	2:45-4:15	8:30-10:00
Treasury Management Track			
Small Cities Roundtable	East Room	1:00-2:30	10:30-12:00
Utility Collections – Liens, Foreclosures, and Bankruptcy	East Room	2:45-4:15	8:30-10:00
Managing Organizational Change & Mentoring the Next Generation	Stehekin A	1:00-2:30	10:30-12:00
Accounting Track			
State Auditor's Office Roundtable	River Room	1:00-2:30	8:30-10:00
Five Components of Internal Controls	River Room	2:45-4:15	10:30-12:00

Continuing Professional Standards – Record of Attendance*

WMTA 31st Annual Conference • April 16-18, 2014 • Campbell's Resort & Conference Center, Chelan, Washington

*This is your official record of attendance, keep this copy for your records.	CPE Credits Available	CPE Credits Earned	CPFA Credits Available	CPFA Credits Earned	APFA Credits Available	APFA Credits Earned
Keynote Speaking						
Brad Worthley – Different Generations, Different Challenges	1.00		0.50			
Brad Worthley – Simple Steps to an Extraordinary Career and Life	1.00		0.50			
Debt Track						
Lean Disclosure	1.50		0.75		1.50	
Avoiding Pitfalls after Bond Issuance	1.50		0.75		1.50	
Debt Policy Development – What, Why, and How Learn	1.50		0.75			
Investments Track						
Creating a Politically Correct Portfolio	4.00		1.75		3.50	
Investment Panel	1.50		0.75			
Investment Policy Development	1.50		0.75			
Building Win-Win Relationships	1.50		0.75			
Banking Track						
Paperless Disbursements	1.50		0.75			
Pre-Paid Cards	1.50		0.75			
The Changing Landscape of Merchant Card Payments	1.50		0.75			
Treasury Management Track						
The Techy Taxpayer	1.50		0.75		1.50	
Small Cities Roundtable	1.50		0.75			
Utility Collections – Liens, Foreclosures, and Bankruptcy	1.50		0.75			
Managing Organizational Change & Mentoring the Next Generation	1.50		0.75			
Accounting Track						
Intermediate Governmental Accounting	4.00		1.75		3.50	
State Auditor's Office Roundtable	1.50		0.75			
Five Components of Internal Controls	1.50		0.75			
TOTAL						